



3M Industrial Adhesives and Tapes Case Study

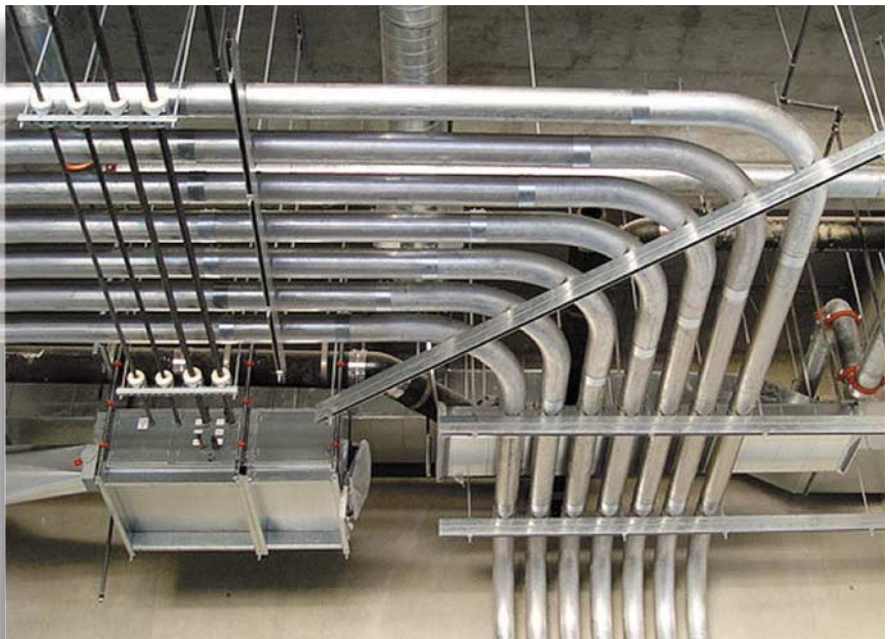
FEATURED IN THIS ISSUE: 3M™ VHB™ TAPE

Unique leak-proof beverage conduit with easy assembly and smooth pull-through for lines.

Colombo Sales and Engineering, Ferndale, MI, combines its own innovative design and assembly tools with 3M™ VHB™ Double-Coated Foam Tape for a cost-effective BeverageChase® System for arenas, restaurants, hotels, and other facilities. A “beverage chase” or conduit contains plastic beverage lines that deliver beer, liquor, soda, and CO2 from remote bulk storage locations to the bar or service counter. The plastic lines often must be pulled through the chase over great distances horizontally, up and down, and around corners and bends. The lines are typically wrapped in insulation and pulled through as a bundle.

With 3M VHB Tape at the chase joints, the interior of the chase is smooth for easy pull-through. Assembly of the chase is easy, fast, and neat.

Bernard Licata, VP of Business Development for Colombo, explains, “If you have a chase that’s 600 feet long for example, the amount of tubing you’re pulling gets heavy. Chase joints must be smooth so you don’t catch and tear the insulation. That’s very important on a beer line where hot spots can cause foaming. Joints must also be strong to bear the weight, and leak proof to contain condensation and line leaks. Bend radii anywhere along the chase must also be great enough to prevent binding.”



Cost-effective and easy-to-install BeverageChase® System combines Colombo innovative design and assembly tools with 3M™ VHB™ Double Coated Foam Tape for arenas, restaurants, hotels, and other facilities.

Colombo provides a custom packaged system that is ready to install at a specific facility. The package includes aluminum conduit with the proper diameter, lengths and bend radii; unique conduit alignment tool for assembly ease; thin gauge steel coupling bands; and die-cut strips of VHB tape.

“We include VHB tape for several reasons,” says Licata. “It’s got high strength. It seals against leaks. And it’s neat and easy to apply. We also include

splice/pull boxes if needed. But with the pull tolerance of our chase the number of boxes are either reduced or eliminated in most cases.”

During assembly, the ends of the aluminum conduits to be spliced are aligned and held in place with the special Colombo alignment tool. The pre-cut VHB Tape is centered over the seam and wrapped around the chase with a 3/16" to 1/4" overlap. The acrylic adhesive tape bonds on contact and fills any

